

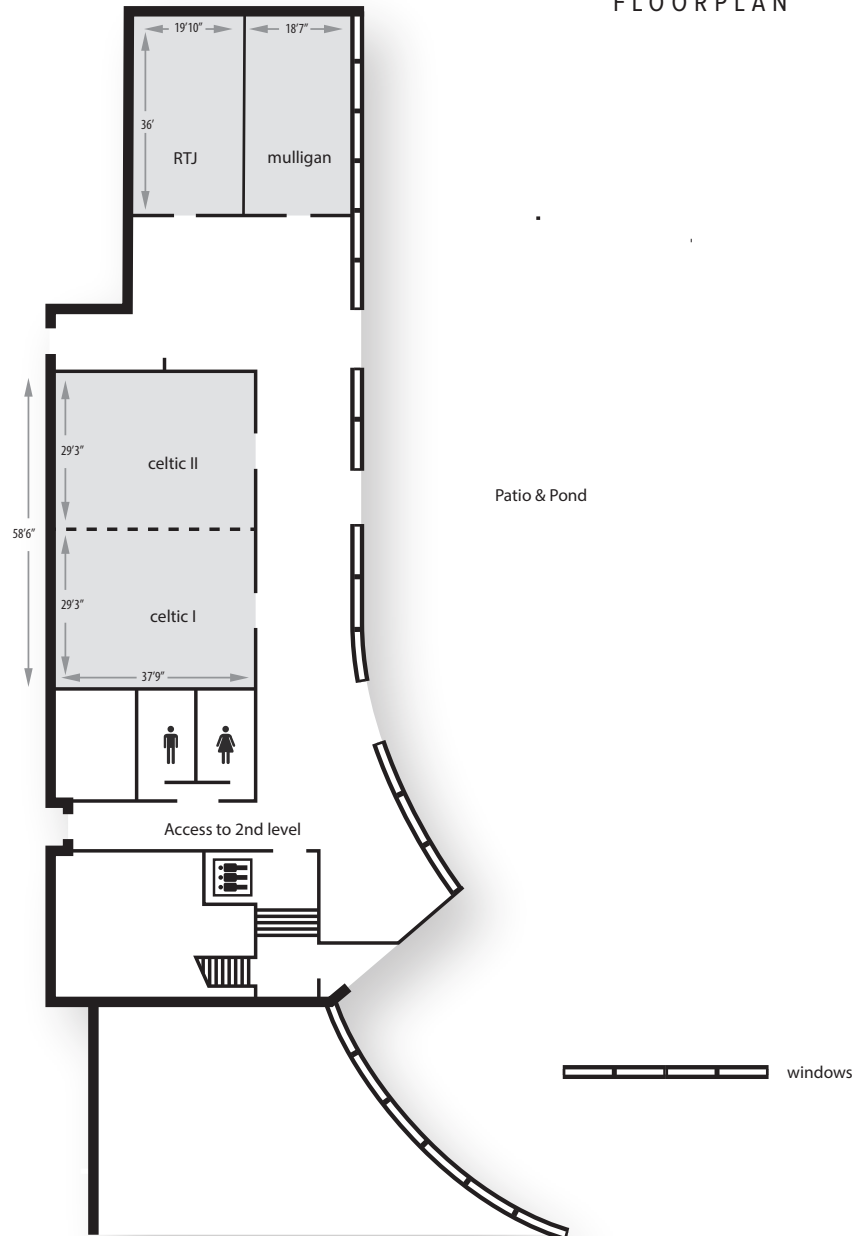


brookstreet
HOTEL

MEETING & EVENT SPACE

LOWER LEVEL

FLOORPLAN



This document contains approximate measurements and square footage that are for illustrative purposes only. We cannot guarantee the floor plan accuracy, please review the space to make sure it is suitable for your event.

brookstreet.com



brookstreet
HOTEL

MEETING & EVENT SPACE

LOWER LEVEL

CAPACITY CHART

	Area (sq.ft)	Ceiling Height (ft)	Boardroom	U-Shape	Theatre	Classroom	Hollow Square	Rounds 10 72" tables	Rounds 10 60" tables	1/2 Rounds 6	Reception
Celtic Ballroom	2220	14	48	54	200	120	58	150	150	90	250
Celtic I	1110	14	28	30	100	60	32	60	60	36	100
Celtic II	1110	14	28	30	100	60	32	60	60	36	100
Mulligan	770	11.1	20	24	70	36	28	40	50	30	50
RTJ	770	11.1	20	24	70	36	28	40	50	30	50

All capacities shown above reflect a maximum set-up and do not include space for audio visual, dance floors or other special requirements.

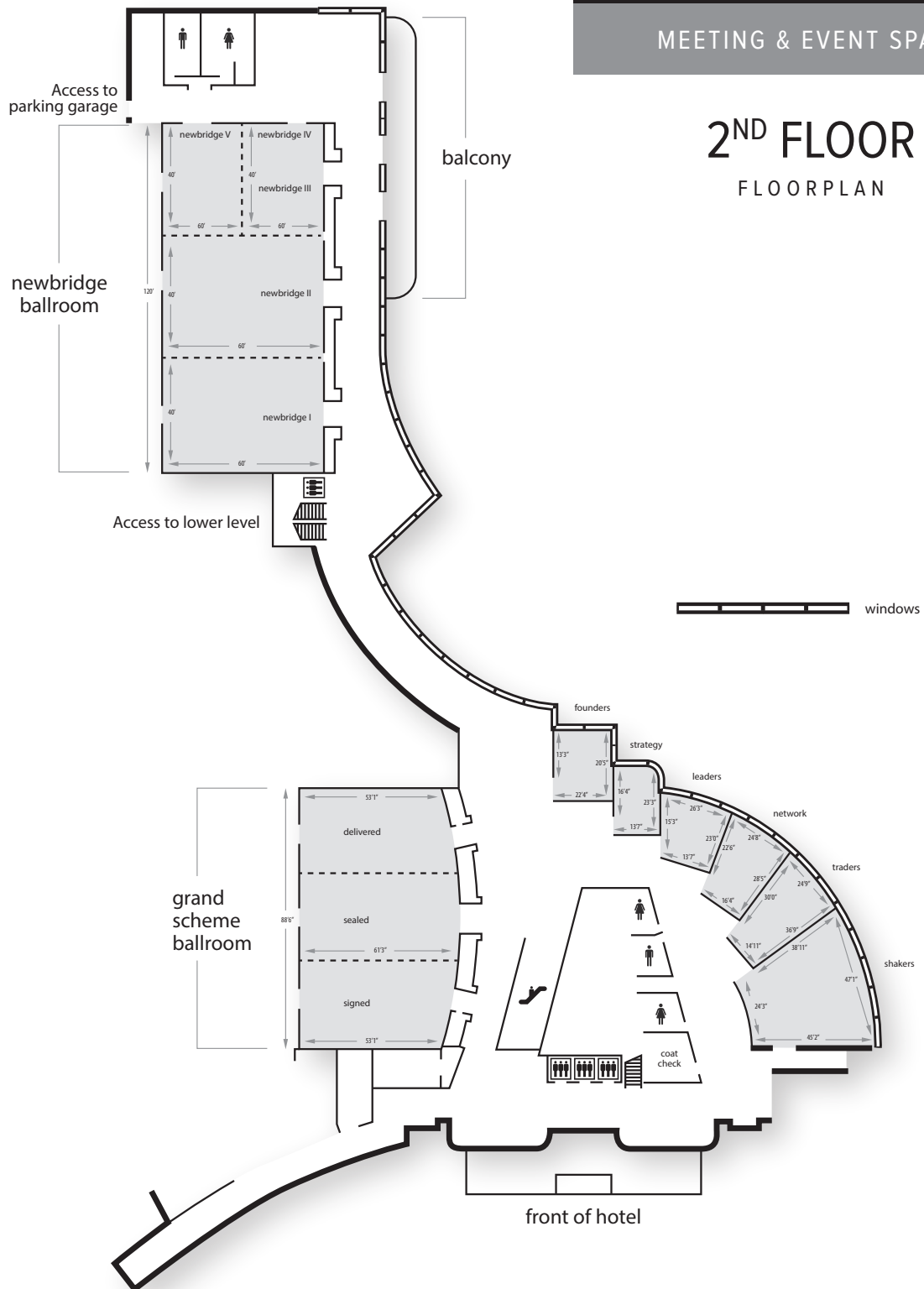
This document contains approximate measurements and square footage that are for illustrative purposes only. We cannot guarantee the floor plan accuracy, please review the space to make sure it is suitable for your event.



brookstreet
HOTEL

MEETING & EVENT SPACE

2ND FLOOR FLOORPLAN



This document contains approximate measurements and square footage that are for illustrative purposes only. We cannot guarantee the floor plan accuracy, please review the space to make sure it is suitable for your event.



brookstreet
HOTEL

MEETING & EVENT SPACE

2ND FLOOR

CAPACITY CHART

	Area (sq.ft)	Ceiling Height (ft)	Boardroom	U-Shape	Theatre	Classroom	Hollow Square	Rounds 10 72" tables	Rounds 10 60" tables	1/2 Rounds 6	Reception
Newbridge Ballroom	7200	20	-	-	600	500	-	500	550	300	1200
Newbridge I & II or II & III	4800	20	-	-	400	300	-	310	350	196	700
Newbridge I, II or III	2400	20	48	54	200	150	64	150	170	90	300
Newbridge IV or V	1200	20	28	30	100	60	34	60	80	48	120
Grand Scheme Ballroom	5188	17	-	-	500	300	-	330	380	228	500
Signed-Sealed or Sealed-Delivered	3458	17	75	100	300	160	120	200	250	150	250
Signed or Sealed or Delivered	1729	17	40	50	150	80	60	100	100	60	125
Shakers	1655	9.5	32	36	140	60	40	100	110	66	150
Traders	721	9.5	20	21	50	24	24	30	40	24	50
Network	603	9.5	18	16	40	20	18	30	40	24	40
Founders	511	9.5	12	14	40	16	14	30	30	18	20
Leaders	490	9.5	12	14	40	16	14	20	30	18	25
Strategy	365	9.5	12	-	-	-	-	-	-	-	-

All capacities shown above reflect a maximum set-up and do not include space for audio visual, dance floors or other special requirements.

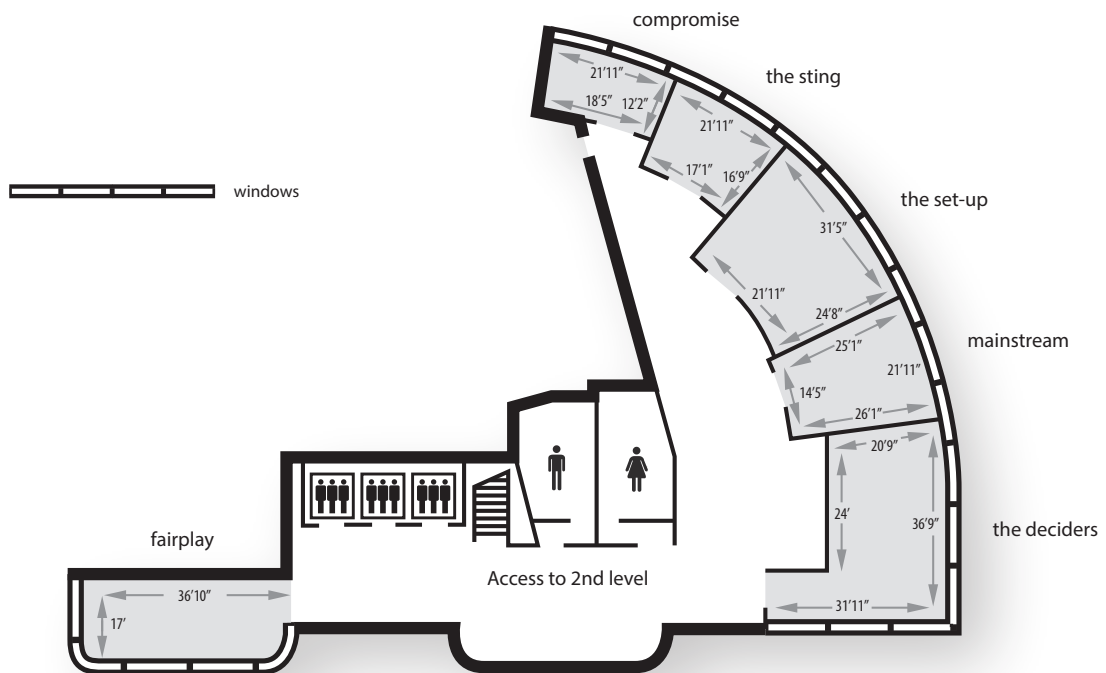
This document contains approximate measurements and square footage that are for illustrative purposes only. We cannot guarantee the floor plan accuracy, please review the space to make sure it is suitable for your event.



brookstreet
HOTEL

MEETING & EVENT SPACE

3RD FLOOR FLOORPLAN



This document contains approximate measurements and square footage that are for illustrative purposes only. We cannot guarantee the floor plan accuracy, please review the space to make sure it is suitable for your event.

brookstreet.com



brookstreet
HOTEL

MEETING & EVENT SPACE

3RD FLOOR

CAPACITY CHART

	Area (sq.ft)	Ceiling Height (ft)	Boardroom	U-Shape	Theatre	Classroom	Hollow Square	Rounds 10 72" tables	Rounds 10 60" tables	1/2 Rounds 6	Reception
Deciders	700	9.5	24	28	50	26	32	40	50	30	60
Set-Up	680	9.5	22	24	50	24	32	40	40	24	50
Fair Play	560	9.5	18	-	-	-	-	-	-	-	-
Mainstream	490	9.5	16	16	20	18	16	30	30	18	30
Sting	320	9.5	10	-	-	-	-	-	-	-	-
Compromise	245	9.5	10	-	-	-	-	-	-	-	-

All capacities shown above reflect a maximum set-up and do not include space for audio visual, dance floors or other special requirements.

This document contains approximate measurements and square footage that are for illustrative purposes only. We cannot guarantee the floor plan accuracy, please review the space to make sure it is suitable for your event.