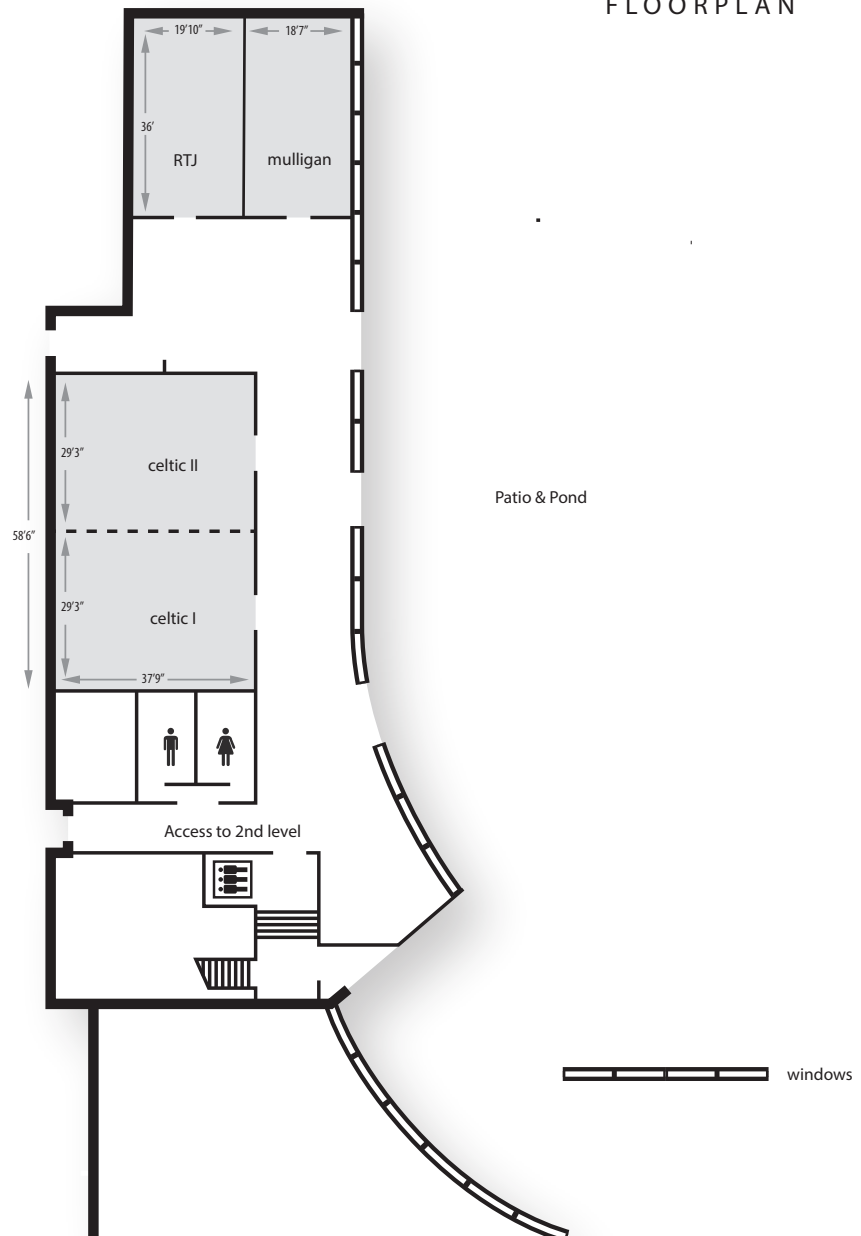




brookstreet  
HOTEL

MEETING & EVENT SPACE

# LOWER LEVEL FLOORPLAN



This document contains approximate measurements and square footage that are for illustrative purposes only. We cannot guarantee the floor plan accuracy, please review the space to make sure it is suitable for your event.

brookstreet.com



brookstreet  
HOTEL

MEETING & EVENT SPACE

# LOWER LEVEL

## CAPACITY CHART

	Area (sq.ft)	Ceiling Height (ft)	Boardroom	U-Shape	Theatre	Classroom	Hollow Square	Rounds 10	Rounds 8	Rounds 5	Reception
Celtic Ballroom	2220	14	70	60	245	150	64	160	128	80	370
Celtic I	1110	14	36	30	120	70	30	80	64	40	180
Celtic II	1110	14	36	30	120	70	30	80	64	40	180
Mulligan	770	11.1	20	18	80	50	18	60	48	30	125
RTJ	770	11.1	20	18	80	50	18	60	48	30	125

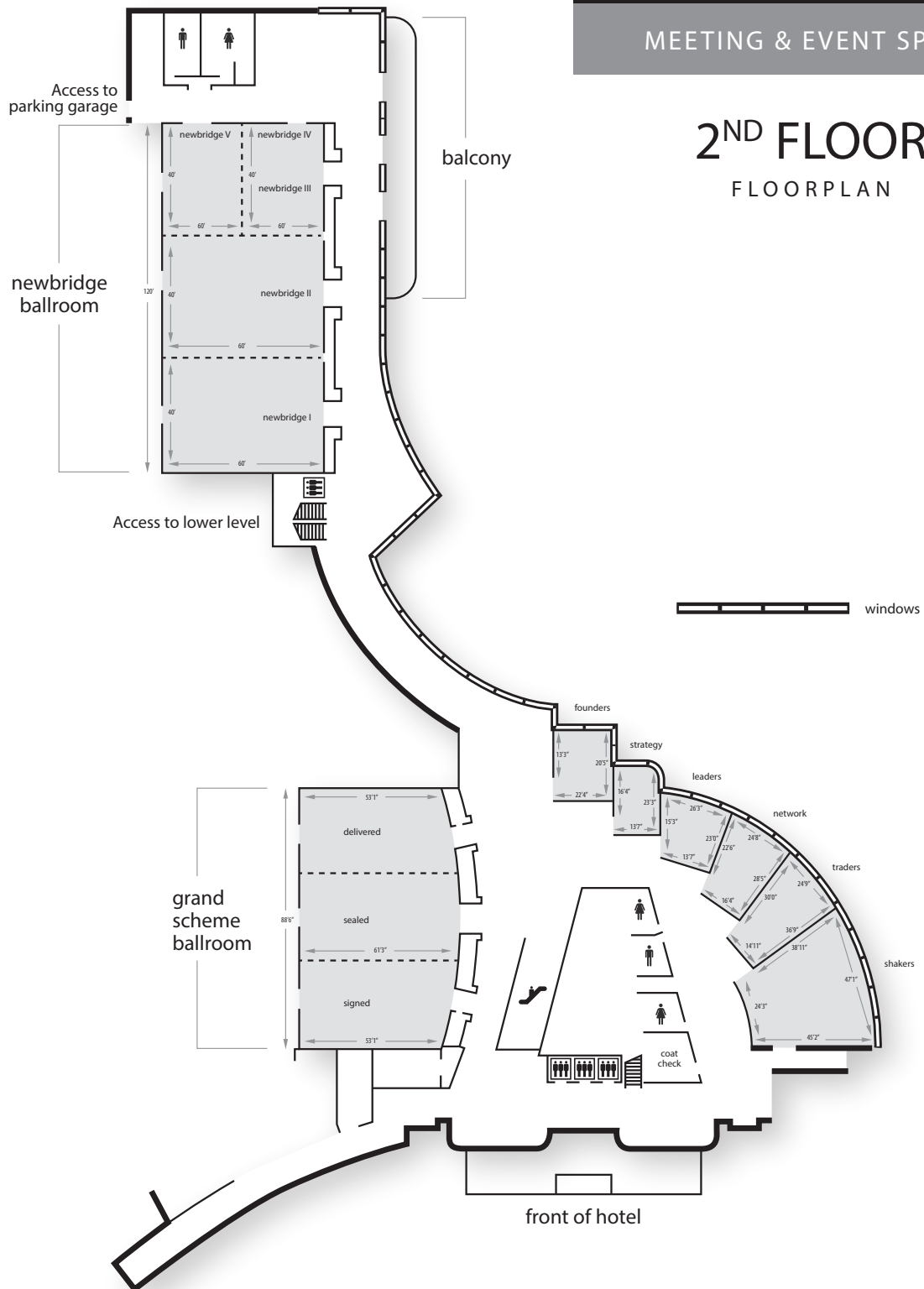
This document contains approximate measurements and square footage that are for illustrative purposes only. We cannot guarantee the floor plan accuracy, please review the space to make sure it is suitable for your event.



brookstreet  
HOTEL

MEETING & EVENT SPACE

2<sup>ND</sup> FLOOR  
FLOORPLAN



This document contains approximate measurements and square footage that are for illustrative purposes only. We cannot guarantee the floor plan accuracy, please review the space to make sure it is suitable for your event.



brookstreet  
HOTEL

MEETING & EVENT SPACE

2<sup>ND</sup> FLOOR  
CAPACITY CHART

	Area (sq.ft)	Ceiling Height (ft)	Boardroom	U-Shape	Theatre	Classroom	Hollow Square	Rounds 10	Rounds 8	Rounds 5	Reception
Newbridge Ballroom	7200	20	-	-	800	500	-	500	400	250	1200
Newbridge I & II or II & III	4800	20	160	130	520	320	130	330	264	165	800
Newbridge I, II or III	2400	20	80	60	260	165	65	180	144	90	400
Newbridge IV or V	1200	20	40	30	130	80	32	90	72	45	200
Grand Scheme Ballroom	5188	17	-	-	600	260	-	370	296	150	500
Signed-Sealed or Sealed-Delivered	3458	17	75	100	230	140	120	200	160	110	250
Signed or Sealed or Delivered	1729	17	40	50	120	60	60	100	80	50	125
Shakers	1655	9.5	34	40	150	60	40	100	80	40	125
Traders	721	9.5	20	20	50	22	25	40	32	20	50
Network	603	9.5	18	16	30	20	18	30	32	20	40
Founders	511	9.5	10	12	30	16	14	30	24	15	20
Leaders	490	9.5	12	20	25	16	14	20	24	15	25
Strategy	365	9.5	12	-	-	-	-	-	-	-	-

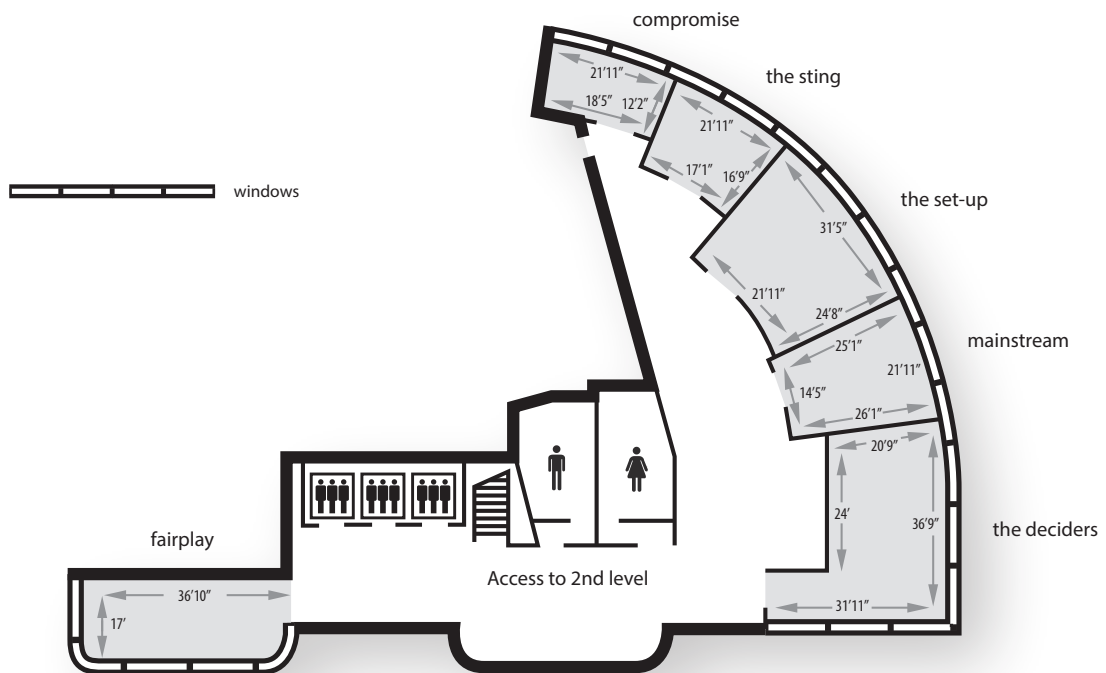
This document contains approximate measurements and square footage that are for illustrative purposes only. We cannot guarantee the floor plan accuracy, please review the space to make sure it is suitable for your event.



brookstreet  
HOTEL

MEETING & EVENT SPACE

# 3<sup>RD</sup> FLOOR FLOORPLAN



This document contains approximate measurements and square footage that are for illustrative purposes only. We cannot guarantee the floor plan accuracy, please review the space to make sure it is suitable for your event.

brookstreet.com



brookstreet  
HOTEL

MEETING & EVENT SPACE

3<sup>RD</sup> FLOOR  
CAPACITY CHART

	Area (sq.ft)	Ceiling Height (ft)	Boardroom	U-Shape	Theatre	Classroom	Hollow Square	Rounds 10	Rounds 8	Rounds 5	Reception
Deciders	700	9.5	28	30	40	26	30	50	40	25	60
Set-Up	680	9.5	16	20	40	20	20	40	32	25	50
Fair Play	560	9.5	18	-	-	-	-	-	-	-	-
Mainstream	490	9.5	16	12	20	12	12	30	24	15	30
Sting	320	9.5	10	-	-	-	-	-	-	-	-
Compromise	245	9.5	10	-	-	-	-	-	-	-	-

This document contains approximate measurements and square footage that are for illustrative purposes only. We cannot guarantee the floor plan accuracy, please review the space to make sure it is suitable for your event.